

Product Name	G655 Granite Countertops		
Sizes in apartment or multifamily projects	Cut to Size as per customer's design (Popular width of kitchen top: 25 1/2", vanity top: 22")		
Thickness	Kitchen top: 3cm Vanity top: 2cm	Surface	Polished
Back Splash	4" or 6"	Faucet Hole	Dia: 1.5", 4" spread
Edge Profile	Eased (R3 & Bevelled)	Sink Cutout	Undermount sink precisely cut as per template

Countertop Images



Material Selection

Sun Young Stone always choose good quality blocks same as the approved sample for orders. Then make a cut plan to minimize wastage.

Slabs Cutting

When the slabs coming out, we will check the quality, and inspect both thickness and flatness.



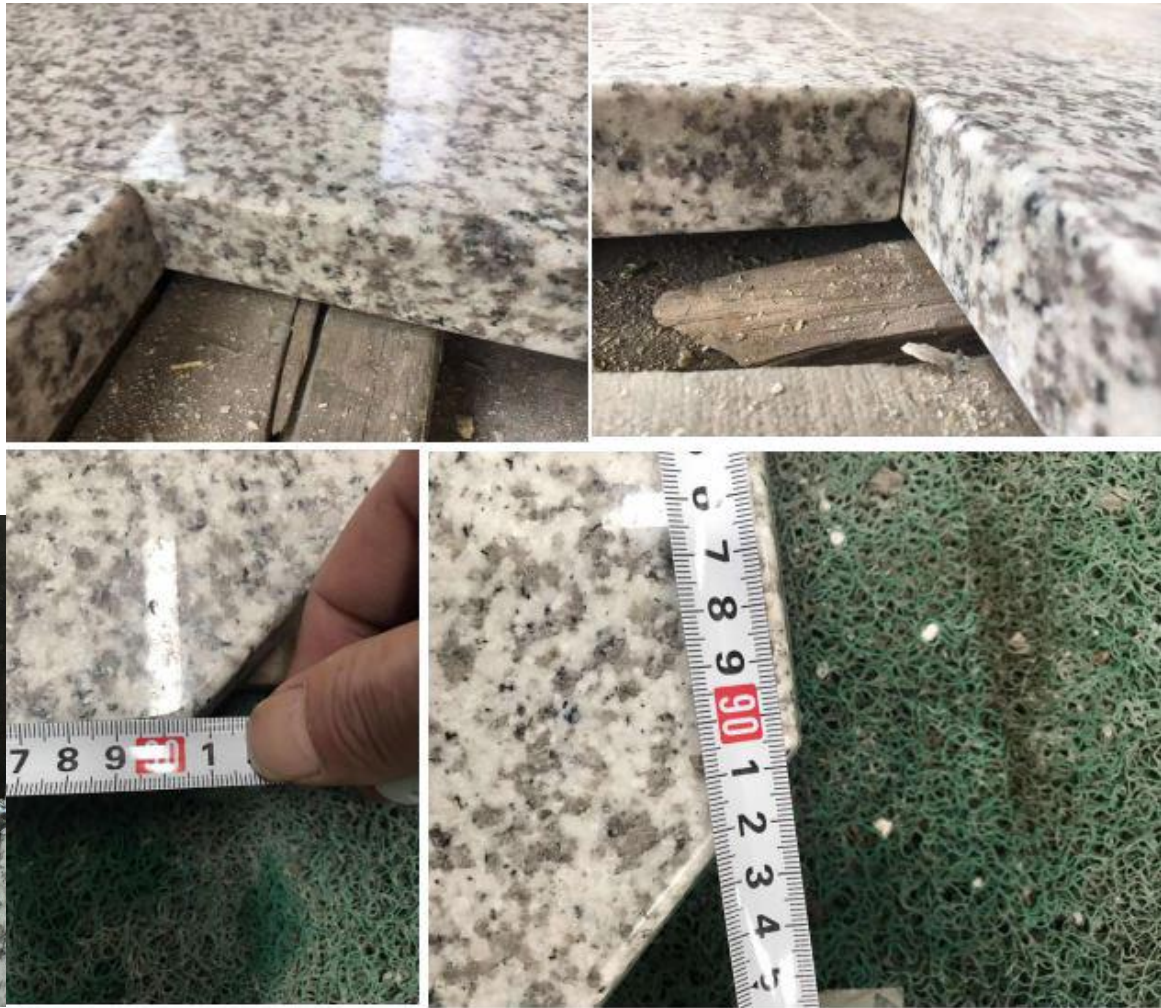
Sink Cutout:

After the slabs are cut into tops, we will cut out sink holes and faucet holes with the templates of sink to make sure they can be 100% matched.



Edge Polishing:

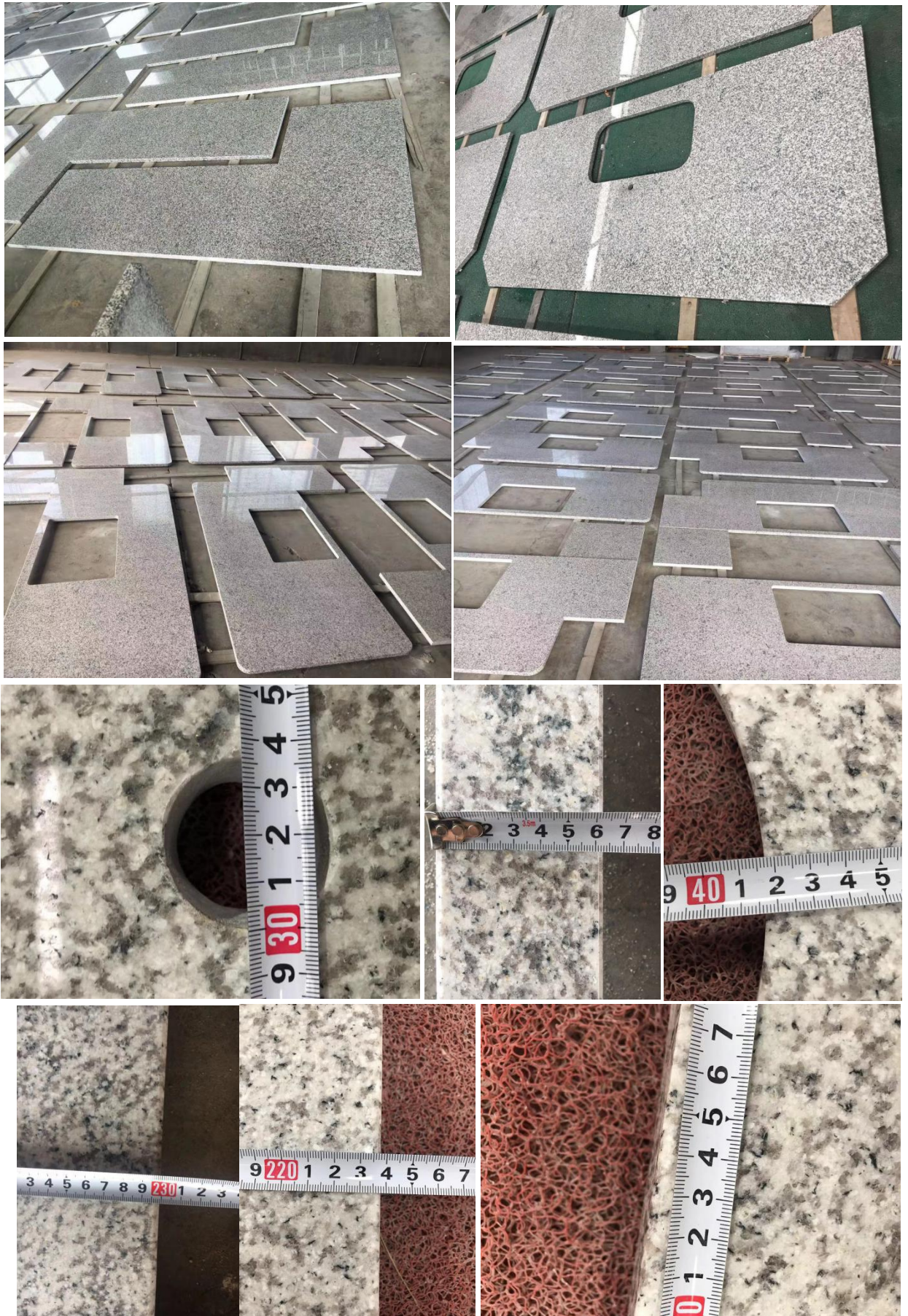
After edge polishing, our QC will check if the whole edges runs evenly and smoothly or not. Ill-polished tops will be refused with red marks and repolished again till it's qualified.



Layout for Inspection:

We lay out kitchen tops and vanity tops according to the drawings and inspect all details, sink hole, faucet hole, seams match.

图片如下



Kitchen Seam:

Sun Young Stone always pay a lot attention on kitchen seam, because the color and edge profile match at seams will effect how the kitchen look like.



Package:

Good strong package is crucial for the goods to arrive at client's site in excellent condition.